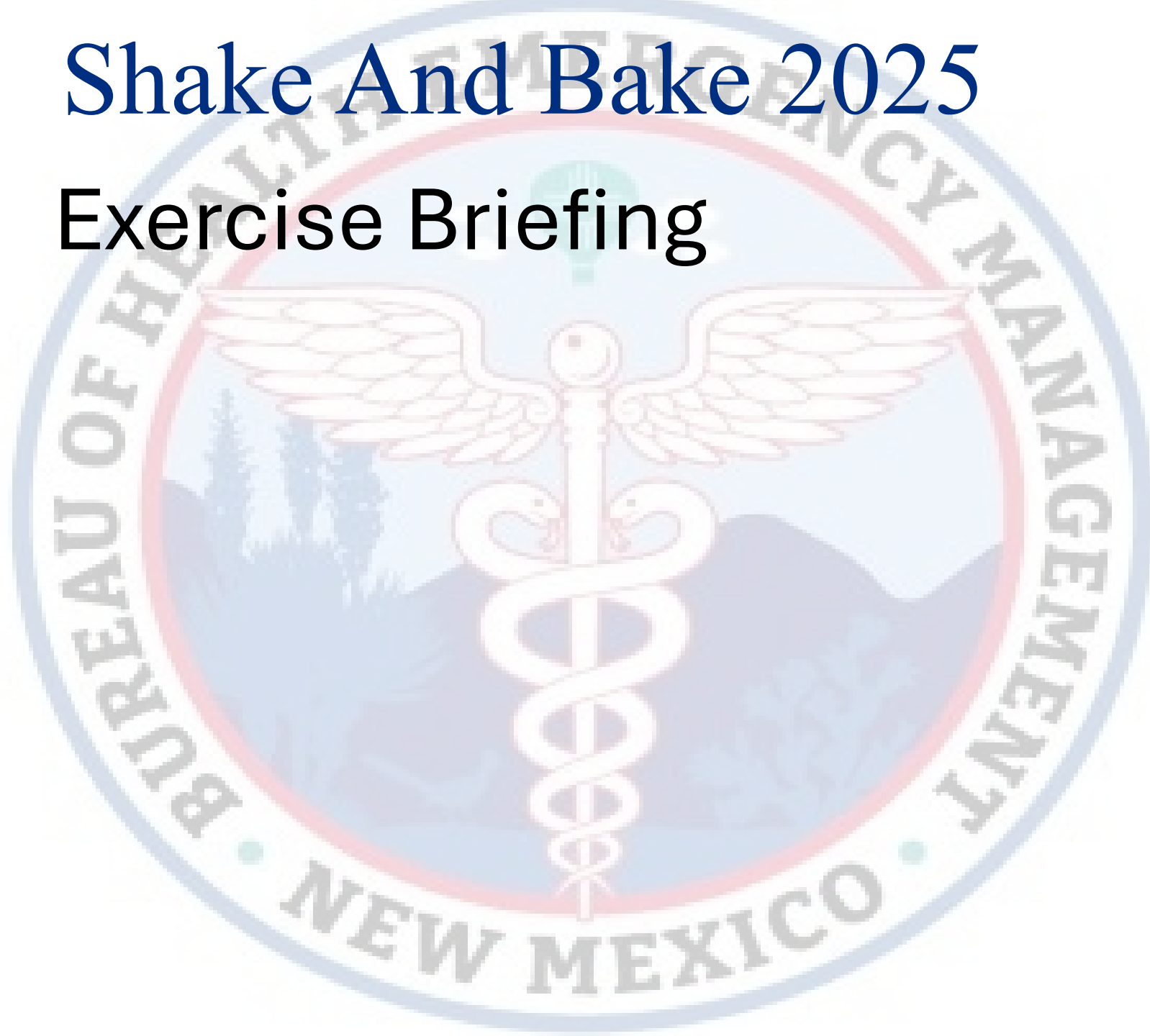


# Shake And Bake 2025

## Exercise Briefing



# Welcome and Overview

*John Hodges*

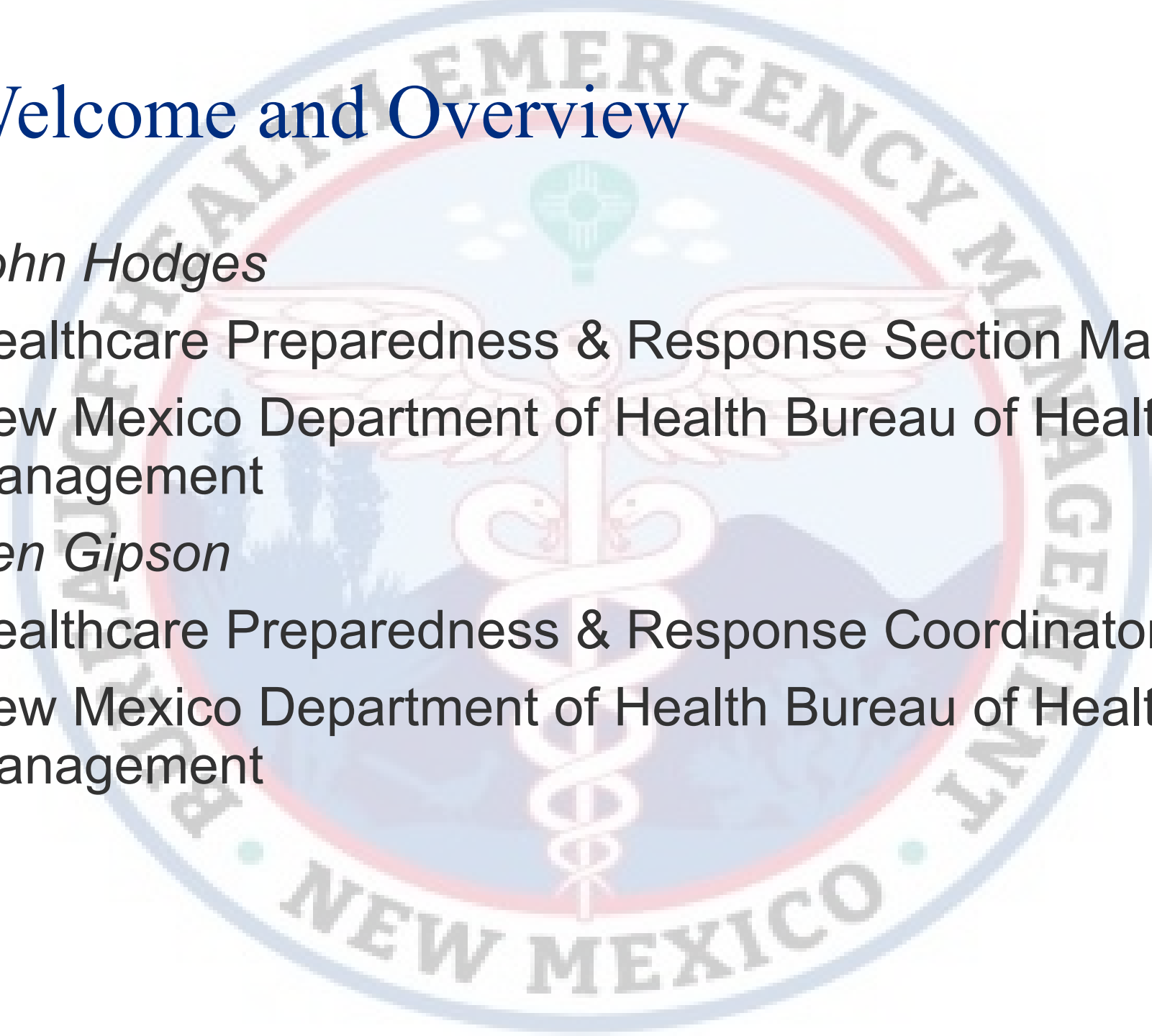
Healthcare Preparedness & Response Section Manager

New Mexico Department of Health Bureau of Health Emergency Management

*Ken Gipson*

Healthcare Preparedness & Response Coordinator

New Mexico Department of Health Bureau of Health Emergency Management

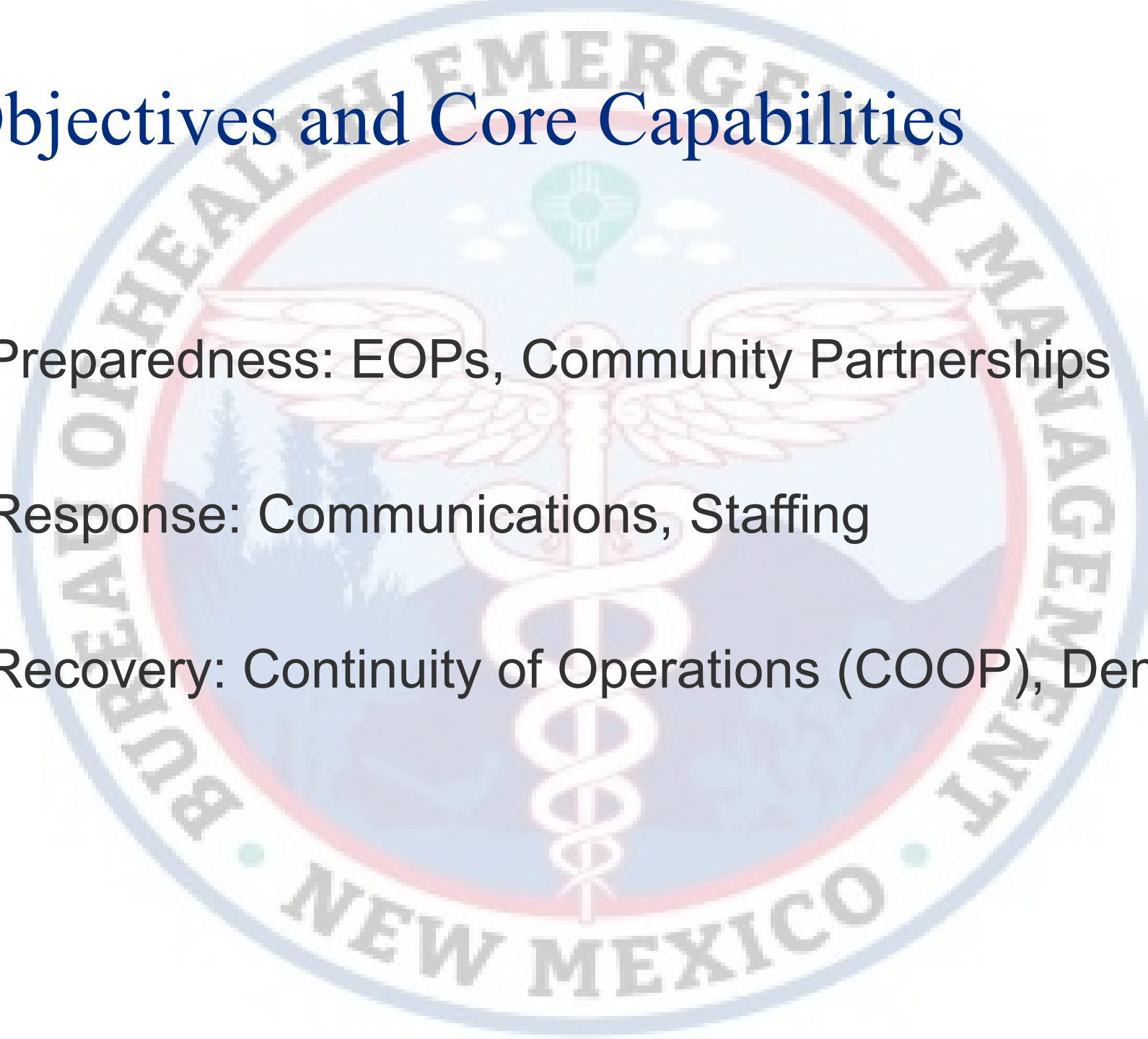


# Exercise Overview

- Exercise scope: Tabletop Exercise for Home Care and Hospice Agencies to discuss preparedness in a scenario involving multiple natural disasters.
- Mission area(s): Preparedness, Response, Continuity of Operations (COOP), and Recovery

# Objectives and Core Capabilities

- Preparedness: EOPs, Community Partnerships
- Response: Communications, Staffing
- Recovery: Continuity of Operations (COOP), Demobilization



# Participant Roles and Responsibilities

- **Players:** Respond to situation presented based on current plans, policies, and procedures
- **Observers:** Support players in developing responses, but do not participate in moderated discussion
- **Facilitators:** Provide situation updates and moderate discussions
- **Evaluators:** Observe and document player discussions

# Exercise Structure

- People come together in a no-fault environment to review and discuss a hypothetical emergency response
- Designed to allow participants to talk through plans and problems. NOT designed to measure anyone's performance
- Serves as a springboard for further planning and more comprehensive exercises

# Exercise Guidelines

- This is an open, low-stress, no-fault environment. Varying viewpoints, even disagreements, are expected
- Base your responses on the current plans and capabilities of your organization
- Decisions are not precedent setting; consider different approaches and suggest improvements
- Issue identification is not as valuable as suggestions and recommended actions that could improve efforts; problem-solving efforts should be the focus

# Assumptions and Artificialities

- The exercise is conducted in a no-fault learning environment wherein capabilities, plans, systems, and processes will be evaluated
- The exercise scenario is plausible, and events occur as they are presented
- All players receive information at the same time
- Some community partners may not be available to participate in the exercise, so the assumption can be made if necessary, that the community partner would be involved in an actual emergency (Fire, EMS, Law Enforcement, NMDOT, NMDOH, NMDHSEM, FEMA, and Tribal Partners)



# Exercise Schedule

Registration

Welcome and Introduction

Module 1: Earthquake

Break

Module 2: Wildfire

Break

Module 3: Picking up the pieces

Break

Hot Wash

Closing Comments



# Module 1: Earthquake



# Module 1

[08/20/25 0900]

- A significant earthquake lasting 30 seconds has just hit the ABQ Metro Area. There is also a significant wind event forecasted for late afternoon with high winds from the west.
- Major damage is widespread. Power lines are down, the upper flyover of the Big I has collapsed, and numerous fires are being reported due to broken gas mains.



# Module 1: Key Issues

- Infrastructure including communications towers badly damaged or destroyed.
- Emergency Response resources are completely stretched.
- Lives wires down everywhere
- Widespread Fires breaking out
- High winds expected in a few hours





# Module 1: Discussion



# Module 2: Wildfire



## Module 2

- The Metro Area is in the initial responses to the earthquake that hit 2.5hrs ago. Initial reports from USGS report the quake at 5.8 on the Richter Scale.
- Dozens of reports of people trapped in their homes. Numerous residential areas are now consumed by fire, including Sandia Heights North, and Tierra Monte in the extreme foothills.
- These fires have now spawned a large wildfire being driven up the Sandias by 35mph winds.
- Hospitals in the area are approaching capacity. UNM and Presbyterian Main have had to partially evacuate due to extensive damage.

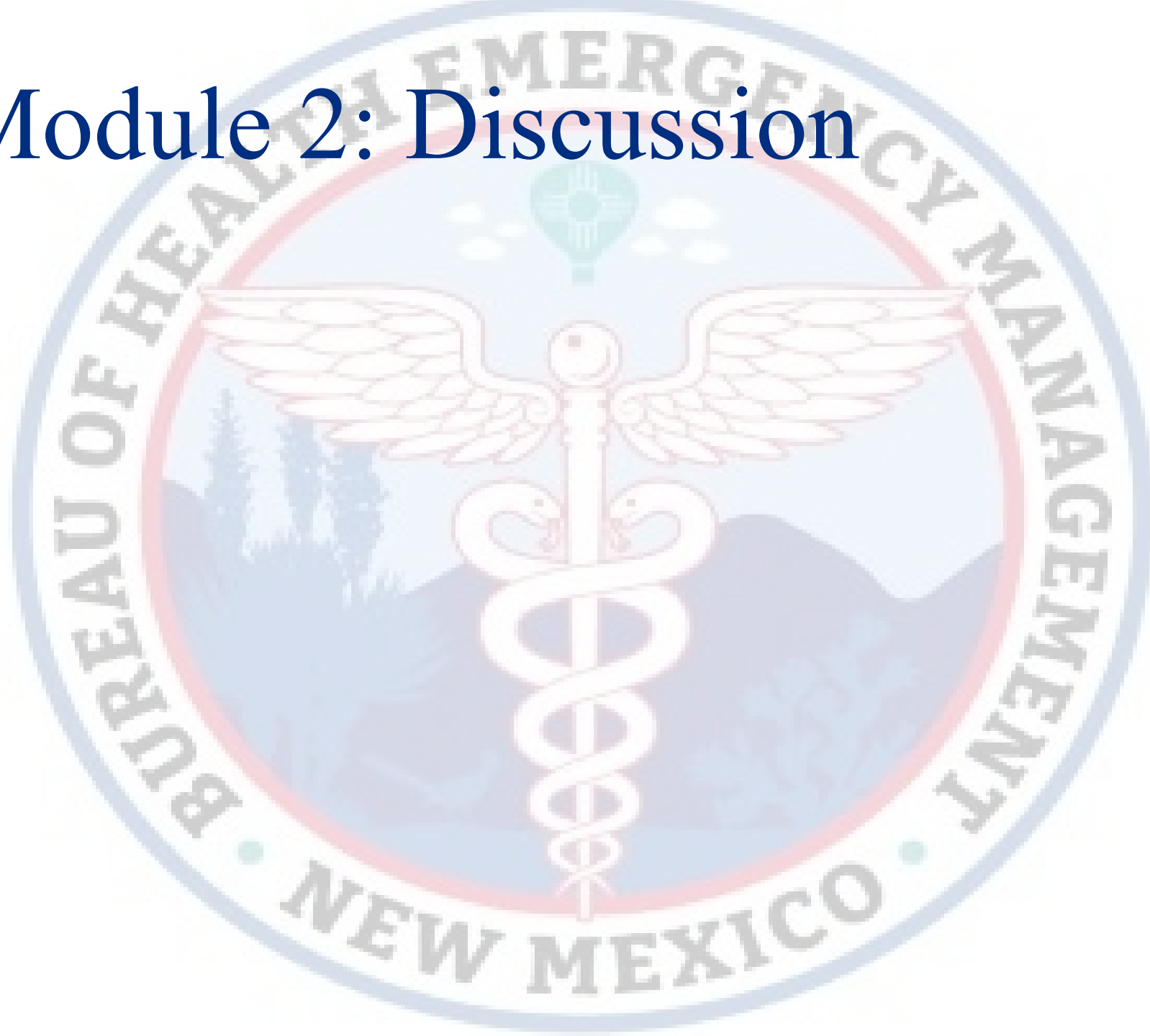
## Module 2: Key Issues

- Large numbers of dead and injured
- Fires are now wind driven
- Hospitals and Emergency Services beyond capacity
- Wildfire threatens to burn down the east side of the mountain
- Most roads are impassable
- Limited communications
- Most City shelter locations too damaged to use.
- Albuquerque Sunport's runways and taxiways have been damaged





# Module 2: Discussion



# Module 3: Recovery





## Module 3

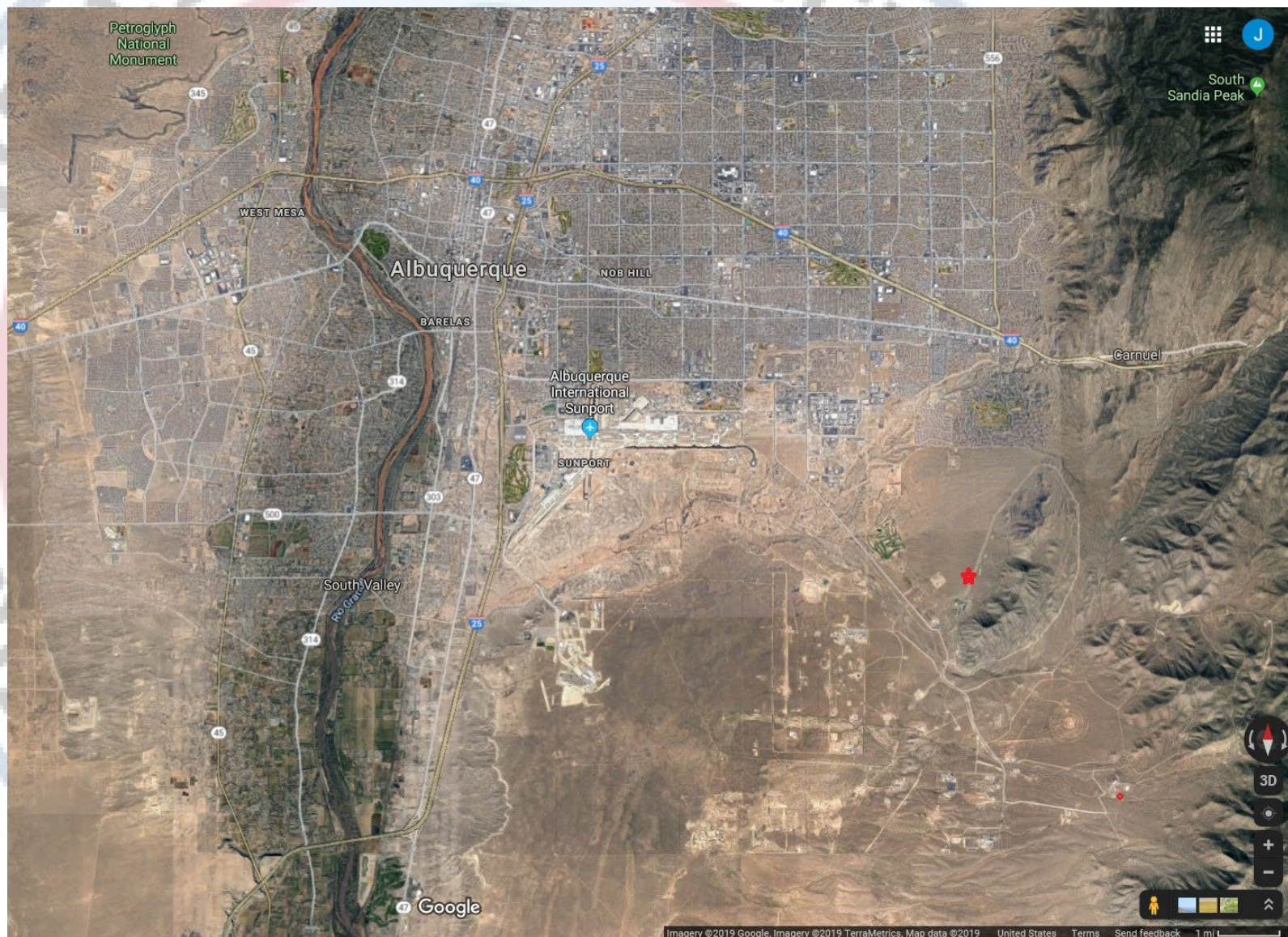
- It's been over 24hrs since the quake hit. The front that brought the winds has also brought some rain behind it. The fires are slowly being extinguished with the exception of the Sandia Heights Fire as it's now being called.
- The winds drove the fire over the mountain, and crews are working the east side with 0% containment.
- The work of rescue and recovery is continuing. The President has made an official disaster declaration at the request of the Governor. State assets are on the ground, and Federal assets are enroute from Santa Fe and Holloman AFB since aircraft cannot land at the Sunport. ETAs vary from 2 more hours to 3 days depending on the resource.

## Module 3: Key Issues

- Communications are very spotty at best
- Wildfire is now threatening those on the East side of the mountain
- Rescue and recovery efforts are still in progress
- Only Rust, Sandoval Regional, and Lovelace Westside are fully operational, but they are well beyond their surge capacities.
- USGS estimates the epicenter of the quake to be 2 miles North Northeast of the US Dept. of Energy Training Center on Kirtland AFB. Along the Sandia Fault.



# Module 3: Discussion



# Hot Wash

- Strengths

- 

- 

- 

- Areas for Improvement—

- 

- 



# Closing Comments

